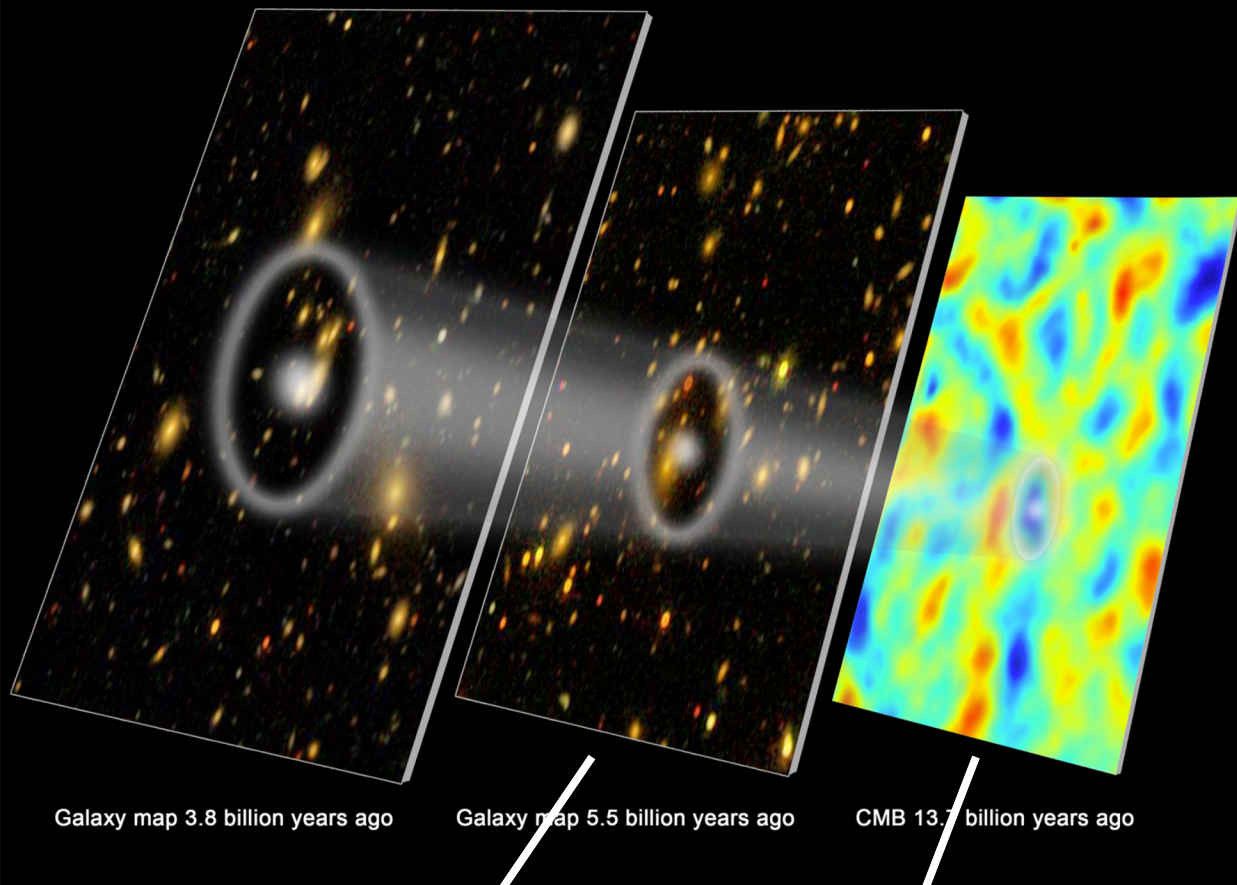


Image credit: Eric Huff (BOSS, SPT)



Galaxy map 3.8 billion years ago

Galaxy map 5.5 billion years ago

CMB 13.7 billion years ago

Planck:

$$\theta_s(a=9.166 \times 10^{-4}) = (0.59672 \pm 0.00035) \text{ deg}$$

SDSS-BOSS:

$$\theta_s(a=0.64) = (4.19 \pm 0.07) \text{ deg}$$

(Scale factor, a , is equal to 1 today)